

Ping June 24 East

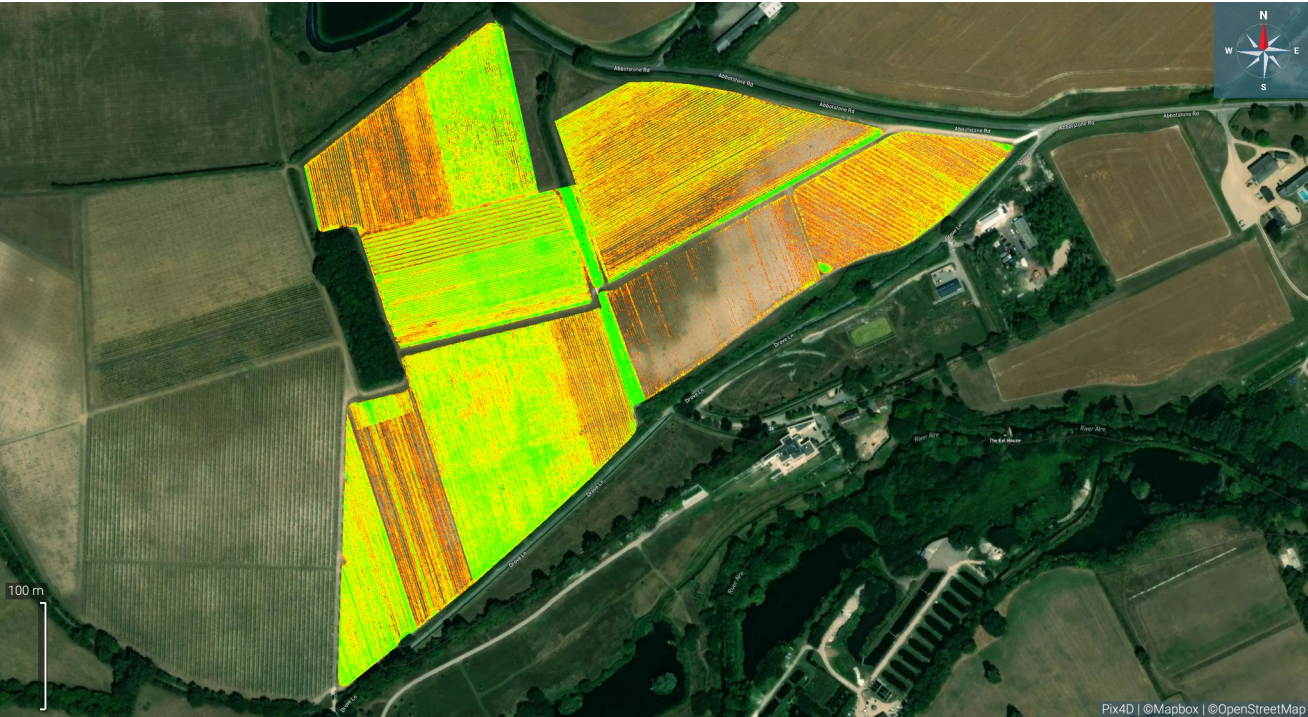


June 24 East blocks

Layer name	Acquisition time	Center	Area	Page
NDVI	02/06/2024 12:00:01 BST	51.0940251, -1.1782698 (WGS84)	15.852 ha	2-5
Powdery Mildew Index RE	02/06/2024 12:00:01 BST	51.0940251, -1.1782698 (WGS84)	15.852 ha	6-10
ReCI chlorophyll leaf content	02/06/2024 12:00:01 BST	51.0940251, -1.1782698 (WGS84)	15.852 ha	11-14
Sat NDMI	25/05/2024 13:17:03 BST	51.0940725, -1.1782059 (WGS84)	16.495 ha	15

NDVI

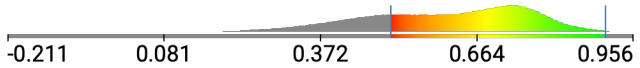
Index



Layer details

Acquisition	02/06/2024 12:00:01 BST Duration: 01:13:27
Center	51.0940251, -1.1782698 (WGS84)
Area	~15.852 ha
GSD	2.794 cm/px
Bands	1 (Gray)

Histogram and Legend



Visualization settings

Histogram equalization: On
Selected minimum value: 0.504
Selected maximum value: 0.903
Values out of range: Transparent

Statistics

Layer area: 15.852 ha
Mean index: 0.612
Index SD: 0.163
Mean index (visible): 0.689
Index SD (visible): 0.095

NDVI
with 1 annotation






All area annotations	0.119 ha
----------------------	----------

NDVI

Annotations

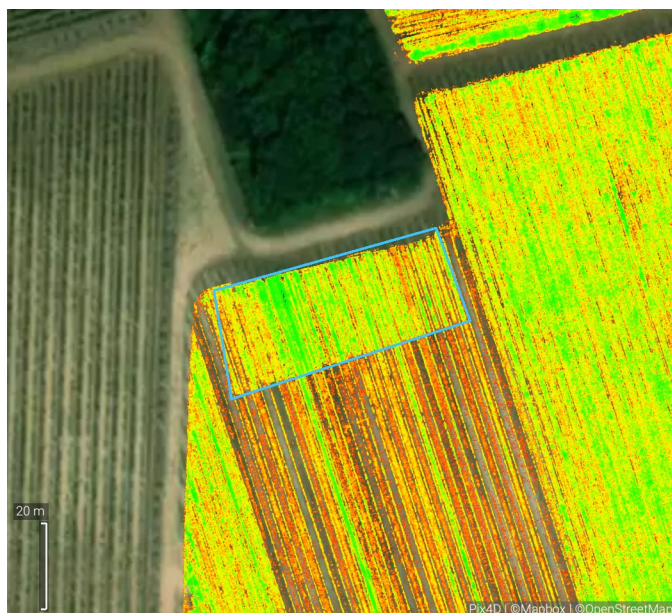


Name	Type	Position, length or area	Description	Attachm.	Color
Distinct lineation in area	 Area	0.119 ha	Between-row growth appears to be much st...	-	 Blue

Area annotations	Area
 Blue	0.119 ha

NDVI

Annotations



Name: Distinct lineation in area

Area: 0.119 ha

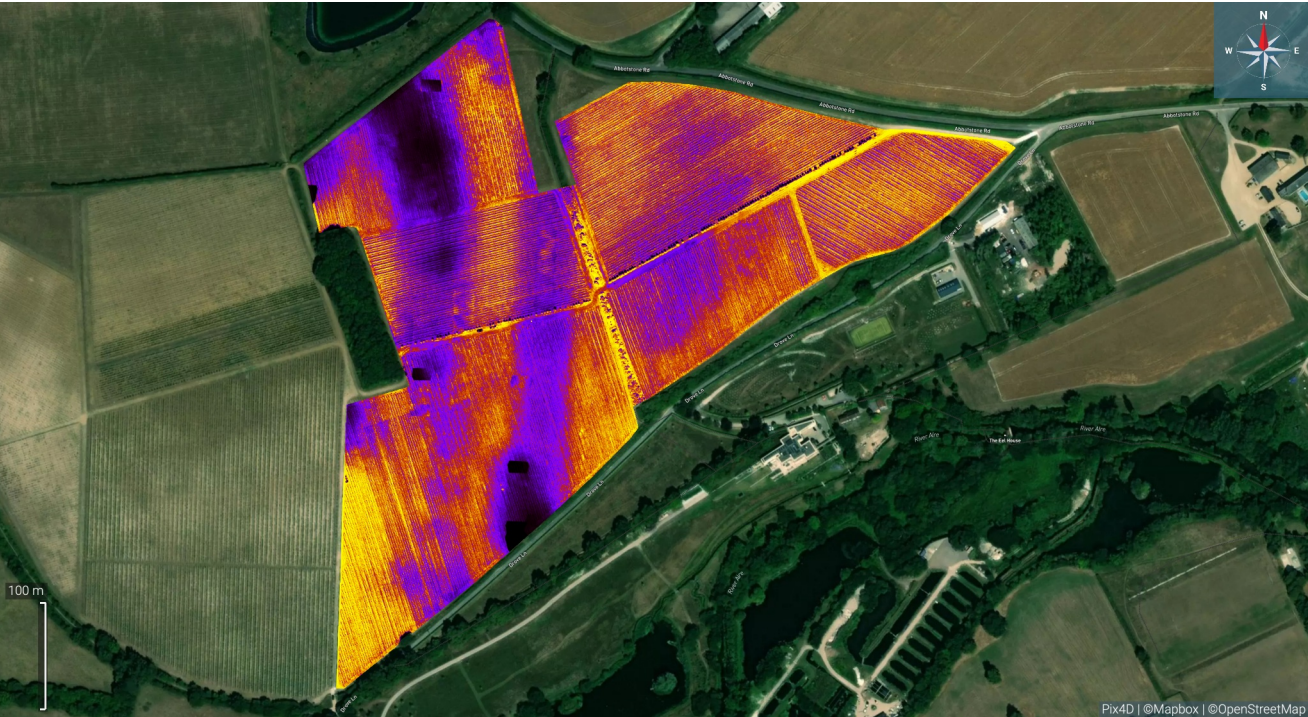
Mean index: 0.685 (SD: 0.124)

Mean index (visible): 0.713 (SD: 0.084)

Between-row growth appears to be much stronger in this area, vine values seem consistent with rest of block. Was some remedy applied to this area?

Powdery Mildew Index RE

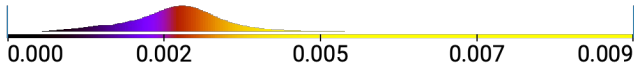
Index



Layer details

Acquisition	02/06/2024 12:00:01 BST Duration: 01:13:27
Center	51.0940251, -1.1782698 (WGS84)
Area	~15.852 ha
GSD	2.794 cm/px
Bands	1 (Gray)

Histogram and Legend



Visualization settings

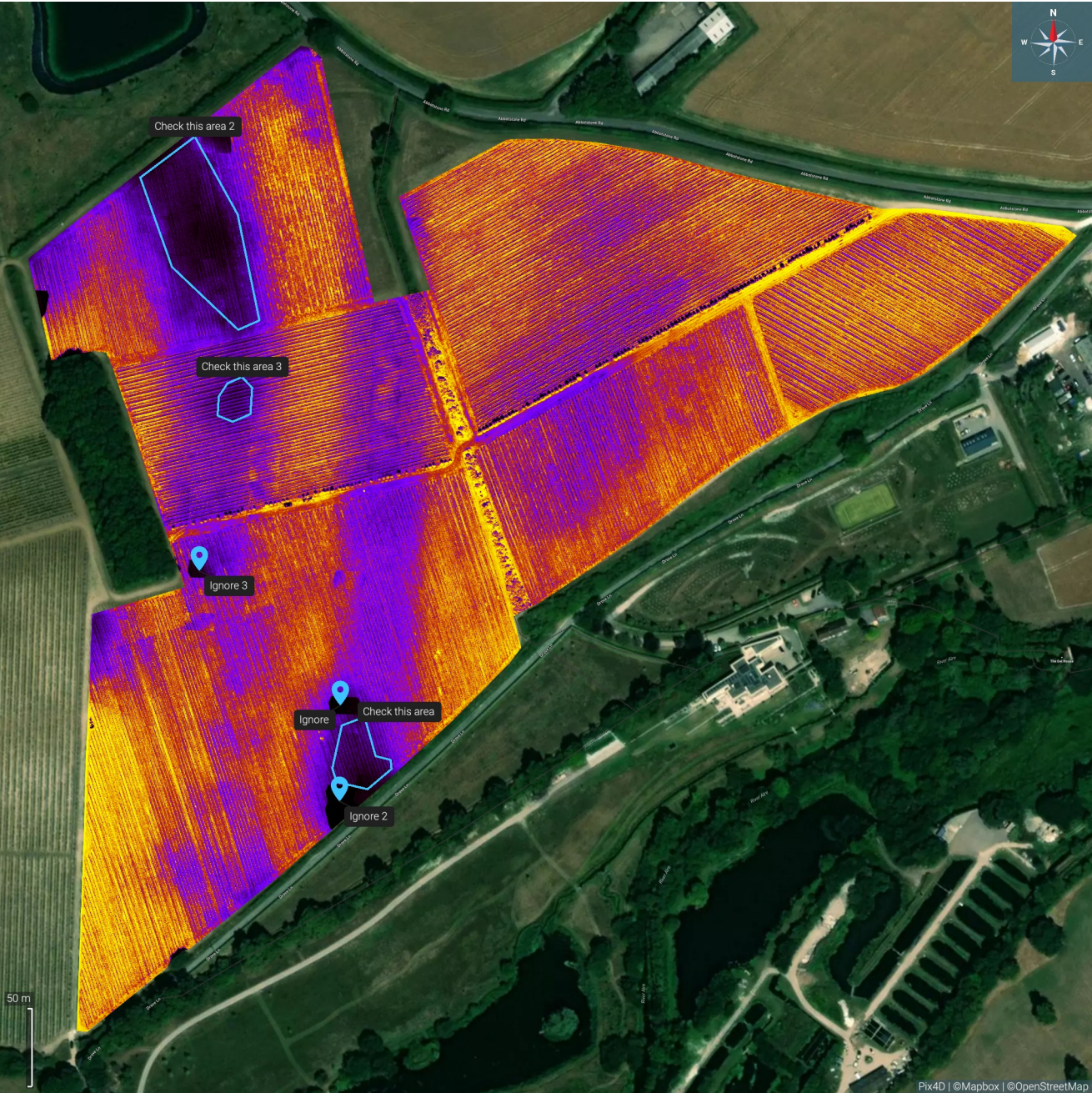
Histogram equalization: On
Selected minimum value: 0.000
Selected maximum value: 0.009
Values out of range: Transparent

Statistics

Layer area: 15.852 ha
Mean index: 0.003
Index SD: 0.001
Mean index (visible): 0.003
Index SD (visible): 0.001

Powdery Mildew Index RE

with 6 annotations
















All area annotations	0.572 ha
----------------------	----------

Powdery Mildew Index RE

Annotations



Name	Type	Position, length or area	Description	Attachm.	Color
Check this area	 Area	958.909 m ²	Could be caused by cloud shadow, but che...	-	 Blue
Check this area 2	 Area	0.434 ha	-	-	 Blue
Check this area 3	 Area	421.966 m ²	-	-	 Blue
Ignore	 Point	51.0931662, -1.1800493	-	-	 Blue
Ignore 2	 Point	51.0926441, -1.1800559	-	-	 Blue
Ignore 3	 Point	51.0938982, -1.1812716	-	-	 Blue

Area annotations	Area
 Blue	0.572 ha

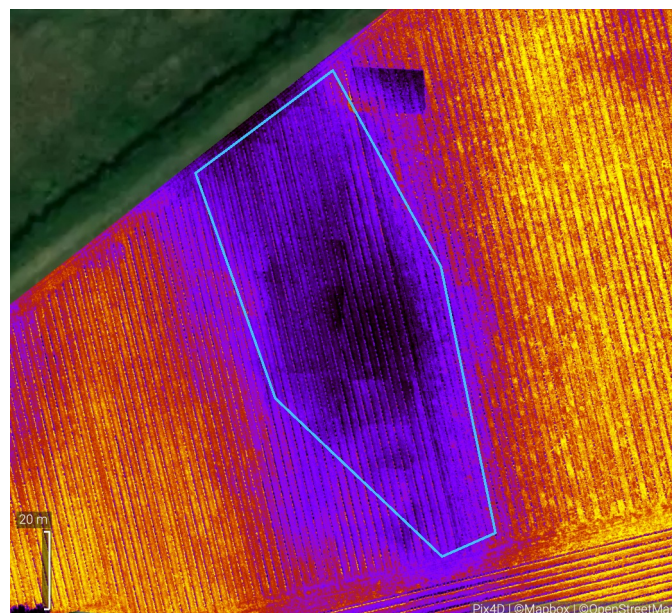
Powdery Mildew Index RE

Annotations

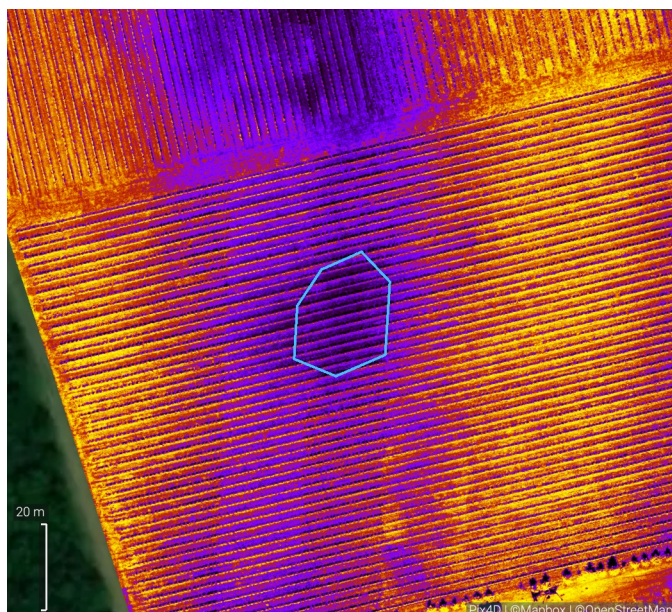


Name: Check this area
Area: 958.909 m²
Mean index: 0.001 (SD: 0.000)
Mean index (visible): 0.001 (SD: 0.000)

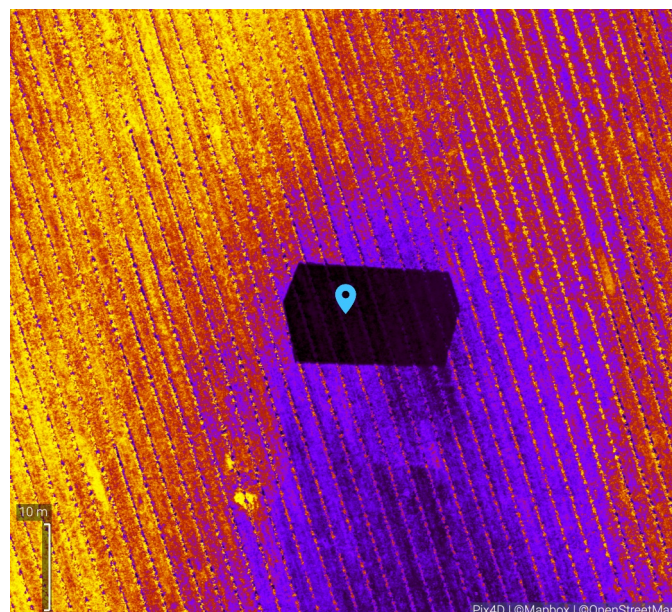
Could be caused by cloud shadow, but check this area when next in the vineyard



Name: Check this area 2
Area: 0.434 ha
Mean index: 0.001 (SD: 0.000)
Mean index (visible): 0.001 (SD: 0.000)



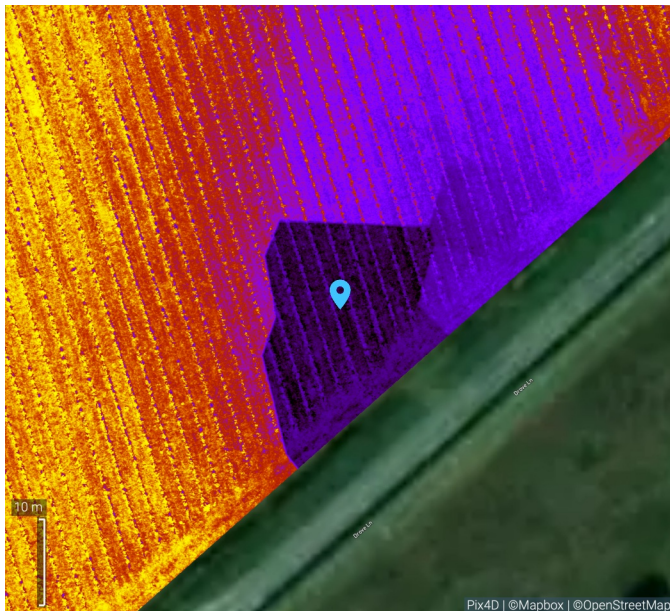
Name: Check this area 3
Area: 421.966 m²
Mean index: 0.001 (SD: 0.000)
Mean index (visible): 0.001 (SD: 0.000)



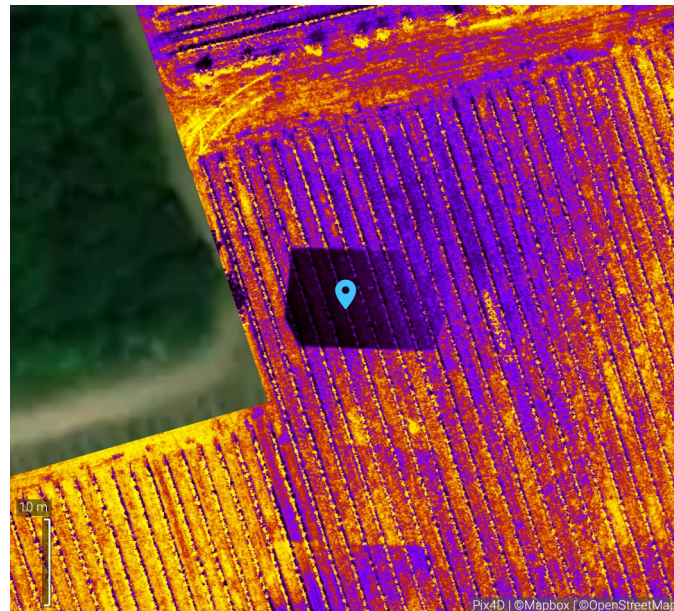
Name: Ignore
Location: 51.0931662, -1.1800493
Index value: 0.001

Powdery Mildew Index RE

Annotations



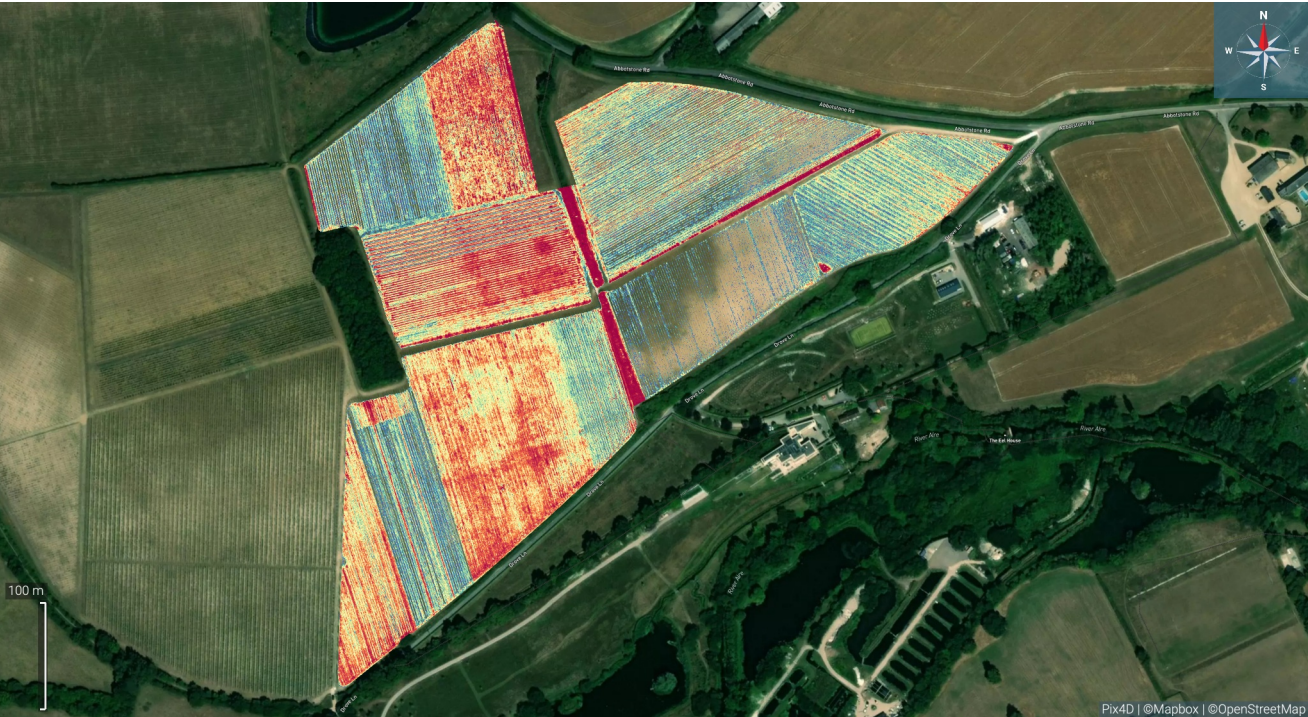
Name: Ignore 2
Location: 51.0926441, -1.1800559
Index value: 0.001



Name: Ignore 3
Location: 51.0938982, -1.1812716
Index value: 0.001

ReCI chlorophyll leaf content

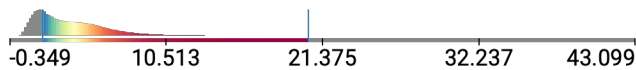
Index



Layer details

Acquisition	02/06/2024 12:00:01 BST Duration: 01:13:27
Center	51.0940251, -1.1782698 (WGS84)
Area	~15.852 ha
GSD	2.794 cm/px
Bands	1 (Gray)

Histogram and Legend



Visualization settings

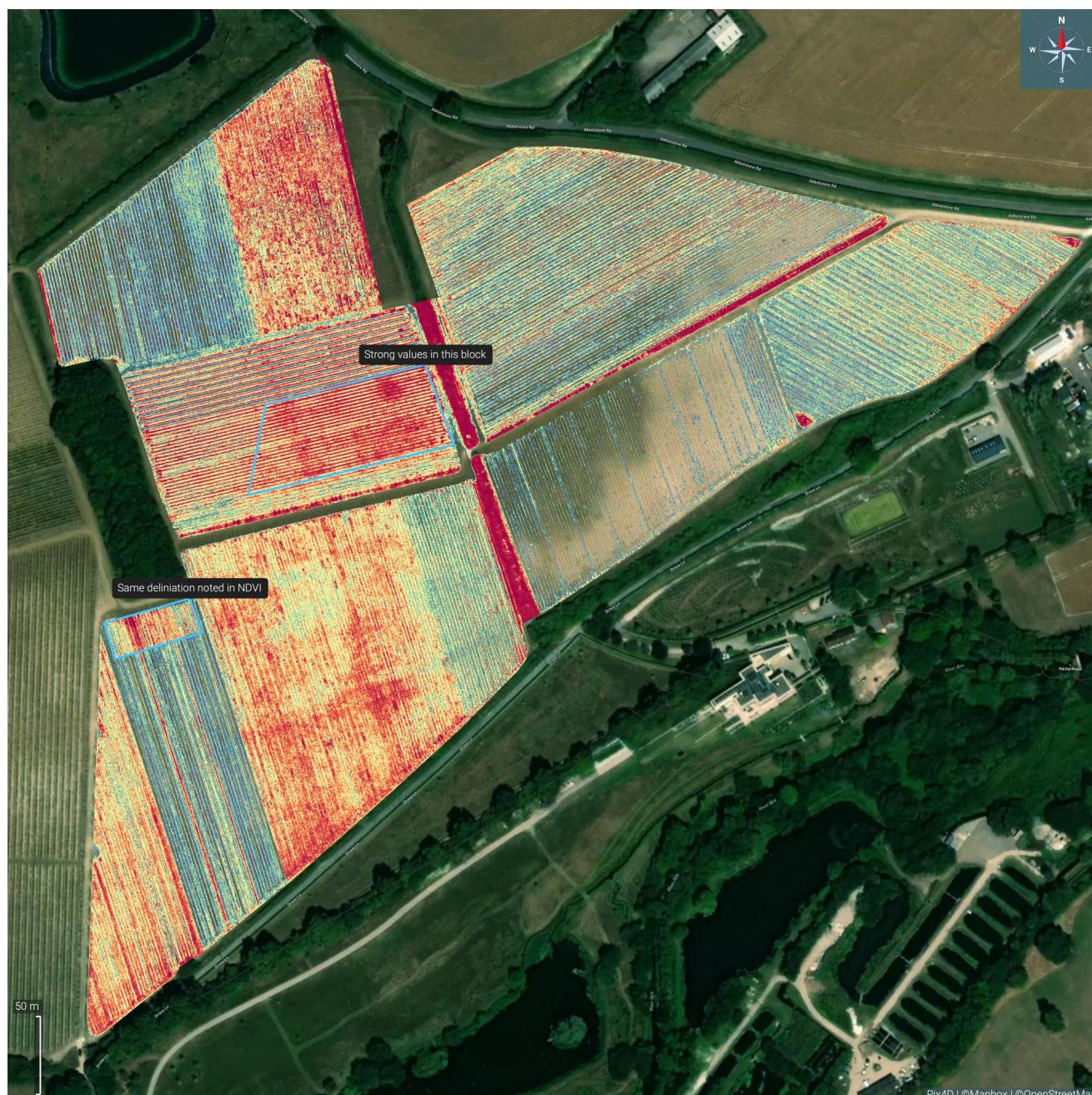
Histogram equalization: On
Selected minimum value: 1.953
Selected maximum value: 20.378
Values out of range: Transparent

Statistics

Layer area: 15.852 ha
Mean index: 4.203
Index SD: 2.876
Mean index (visible): 5.109
Index SD (visible): 2.629

ReCI chlorophyll leaf content

with 2 annotations








All area annotations	0.704 ha
----------------------	----------

ReCI chlorophyll leaf content

Annotations

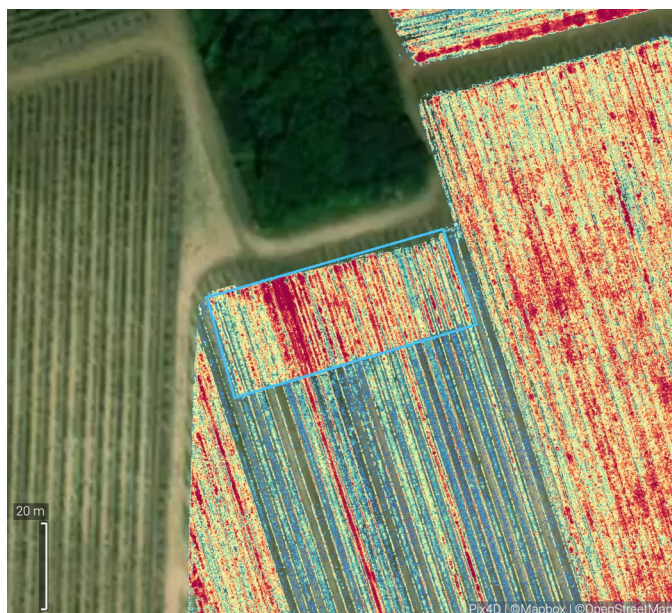


Name	Type	Position, length or area	Description	Attachm.	Color
Same deliniation noted in NDVI	 Area	0.122 ha	-	-	 Blue
Strong values in this block	 Area	0.582 ha	-	-	 Blue

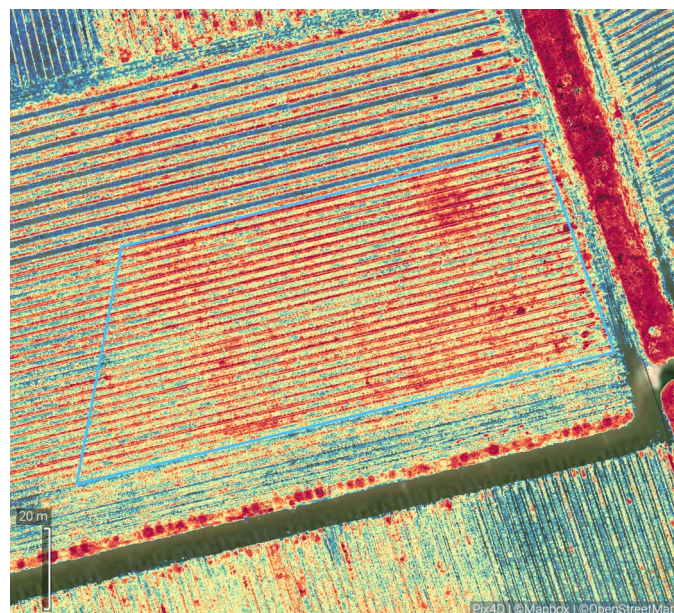
Area annotations	Area
 Blue	0.704 ha

ReCI chlorophyll leaf content

Annotations



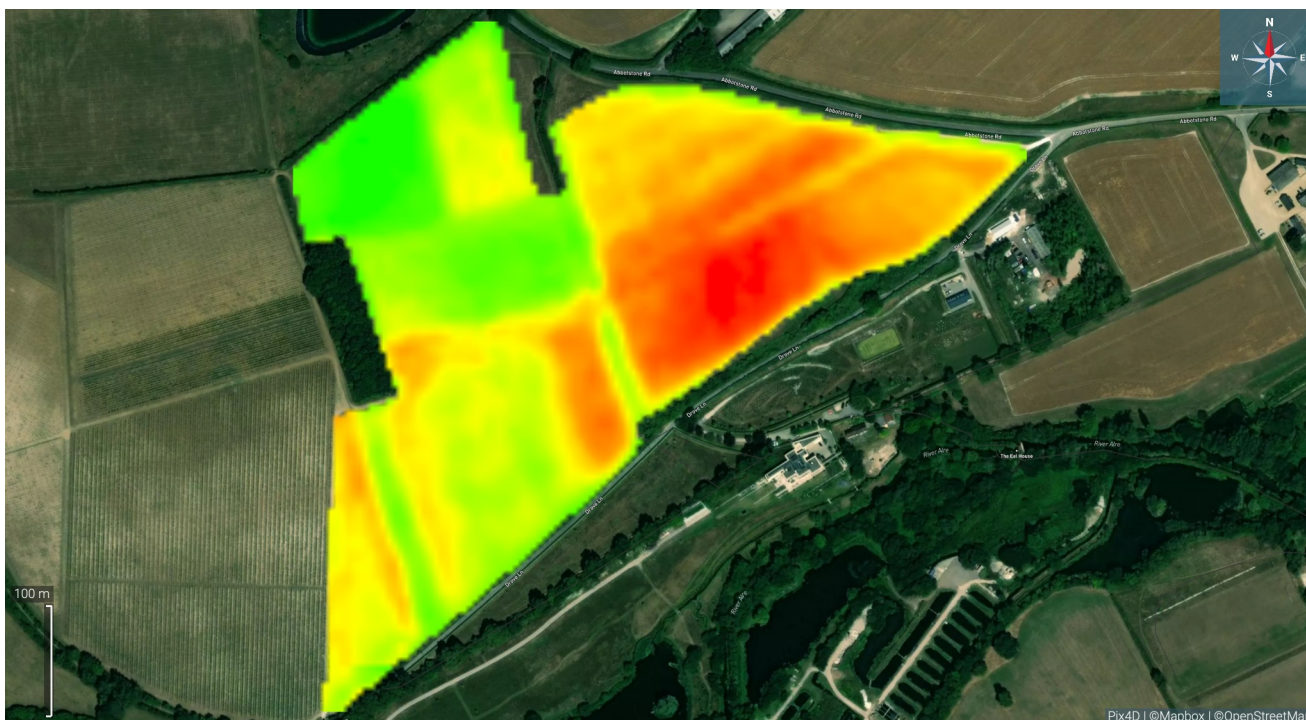
Name: Same deliniation noted in NDVI
Area: 0.122 ha
Mean index: 5.230 (SD: 2.737)
Mean index (visible): 5.604 (SD: 2.556)



Name: Strong values in this block
Area: 0.582 ha
Mean index: 7.250 (SD: 3.166)
Mean index (visible): 7.241 (SD: 3.091)

Sat NDMI

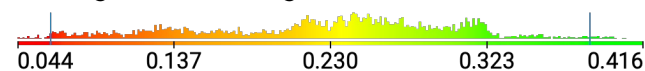
Index



Layer details

Acquisition	25/05/2024 13:17:03 BST
Center	51.0940725, -1.1782059 (WGS84)
Area	~16.495 ha
GSD	503.408 cm/px
Bands	1 (Gray)

Histogram and Legend



Visualization settings

Histogram equalization: On
Selected minimum value: 0.063
Selected maximum value: 0.384
Values out of range: Solid

Statistics

Layer area: 16.495 ha
Mean index: 0.223
Index SD: 0.073
Mean index (visible): 0.219
Index SD (visible): 0.067